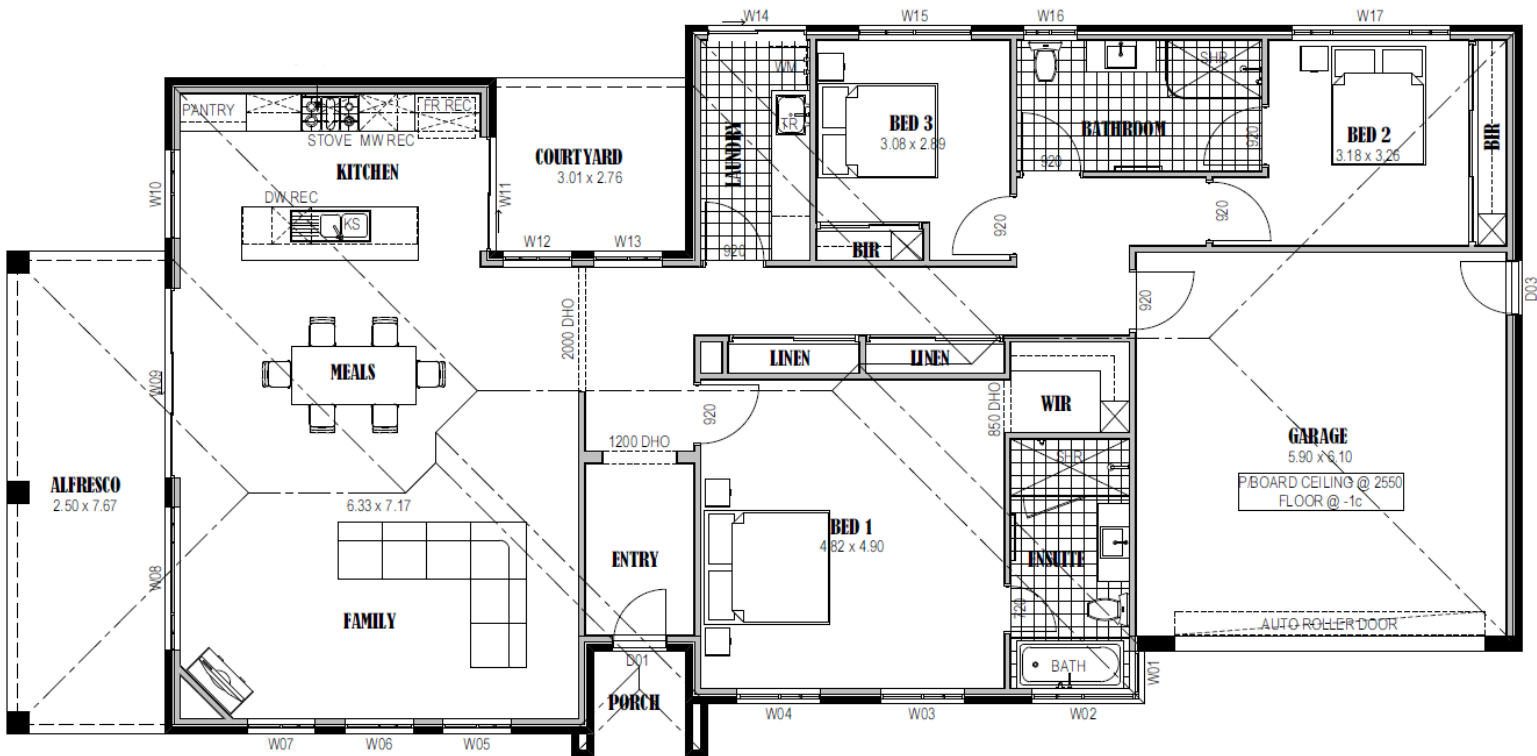


Crawford 245



- ✓ Siteworks and foundations
- ✓ 2550mm ceiling height
- ✓ H2 termite resistant framing
- ✓ Colorbond roof and downpipes
- ✓ Full height kitchen
- ✓ Glass splashback
- ✓ Carpet and tiles
- ✓ Automatic roller door
- ✓ Ducted heating and cooling
- ✓ Driveway and paths
- ✓ Letterbox and clothesline
- ✓ 900mm Omega appliances
- ✓ Downlights throughout
- ✓ Plus much more...

\$244,000
Less FHOg \$26,500

\$217,500

Living Area	175.72 m2	18.90 sq
Garage	38.99 m2	4.19 sq
Porch	2.86 m2	0.31 sq
Alfresco	19.18 m2	2.06 sq
Courtyard	8.31 m2	0.89 sq
TOTAL	245.06 m2	26.35 sq

[House Size 11.5m wide x 23.9m long]

