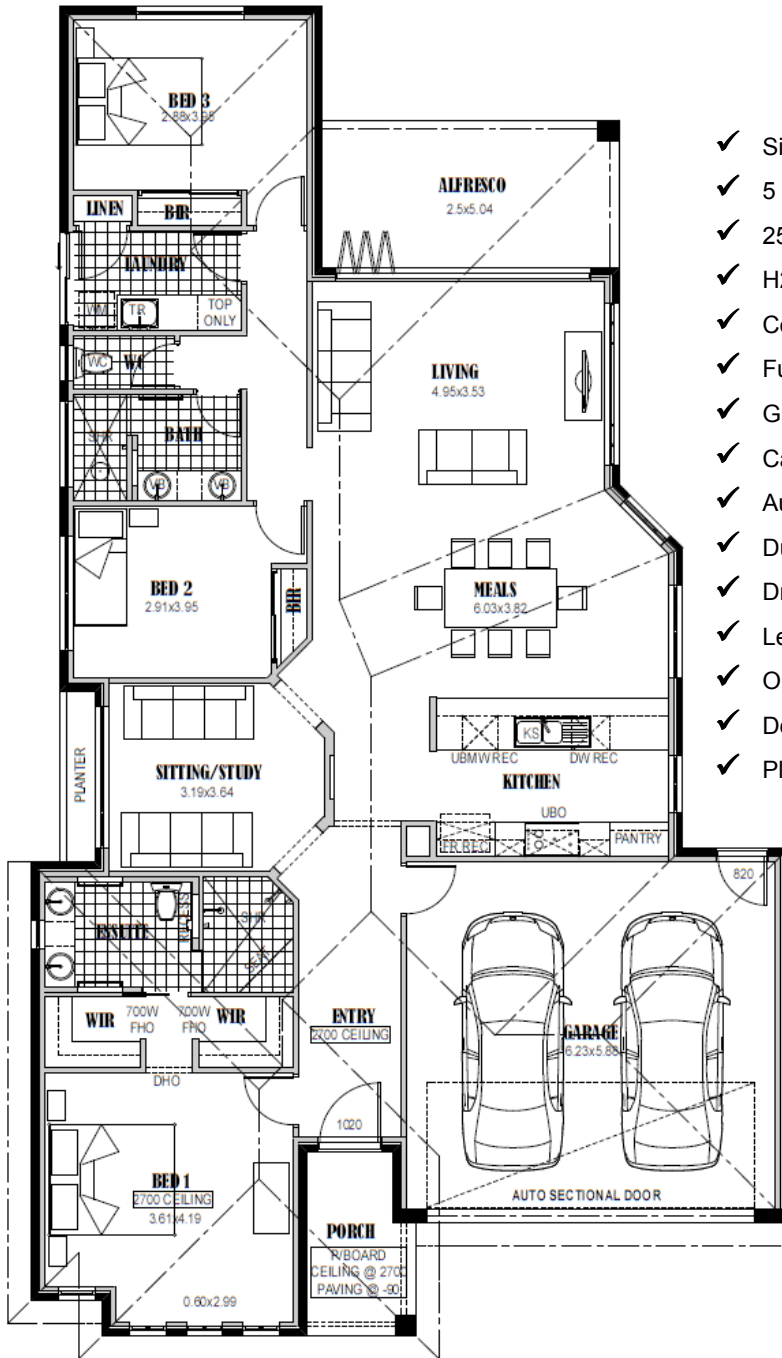


Castleton 222



- ✓ Siteworks and foundations
- ✓ 5 star energy rating
- ✓ 2550mm ceiling height
- ✓ H2 termite resistant framing
- ✓ Colorbond roof and downpipes
- ✓ Full height kitchen
- ✓ Glass splashback
- ✓ Carpet and tiles
- ✓ Automatic roller door
- ✓ Ducted heating and cooling
- ✓ Driveway and paths
- ✓ Letterbox and clothesline
- ✓ Omega appliances
- ✓ Downlights throughout
- ✓ Plus much more...



\$226,000
Less FHO \$26,500
\$199,500

Living Area	164.30 m2	17.67 sq
Garage	40.25 m2	4.33 sq
Porch	5.27 m2	0.56 sq
Alfresco	12.60 m2	1.35 sq
TOTAL	222.42 m2	23.91 sq

[House Size 12.8m wide x 22.5m long]