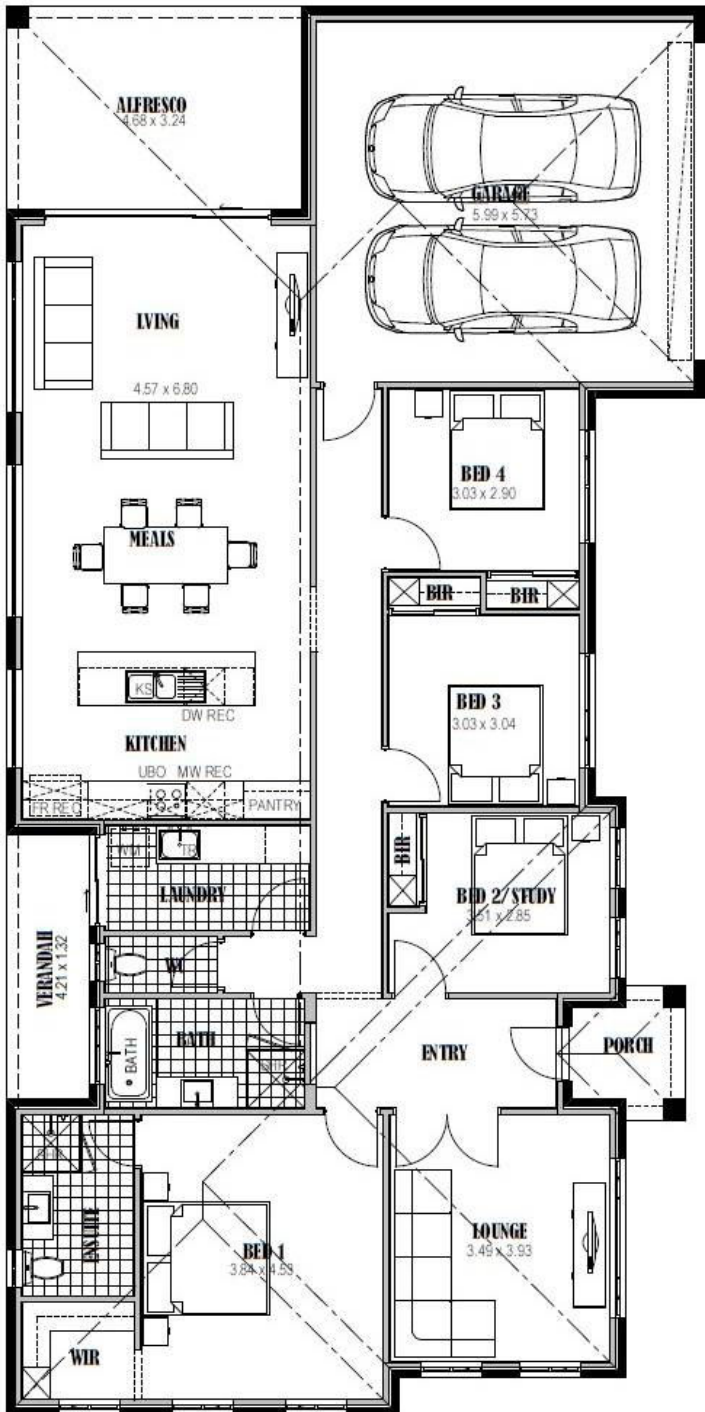


O'Meara 225



- ✓ Siteworks and foundations
- ✓ 5 star energy rating
- ✓ 2550mm ceiling height
- ✓ H2 termite resistant framing
- ✓ Colorbond roof and downpipes
- ✓ Full height kitchen
- ✓ Glass splashback
- ✓ Carpet and tiles
- ✓ Automatic roller door
- ✓ Ducted heating and cooling
- ✓ Driveway and paths
- ✓ Letterbox and clothesline
- ✓ Omega appliances
- ✓ Downlights throughout
- ✓ Plus much more...

\$223,000
Less FHOg \$26,500
\$196,500

Living Area	163.03 m2	17.53 sq
Garage	38.53 m2	4.14 sq
Porch	3.28 m2	0.35 sq
Alfresco	15.16 m2	1.63 sq
Verandah	5.56 m2	0.60 sq
TOTAL	225.56 m2	24.25 sq

[House Size 11.2m wide x 22.5m long]