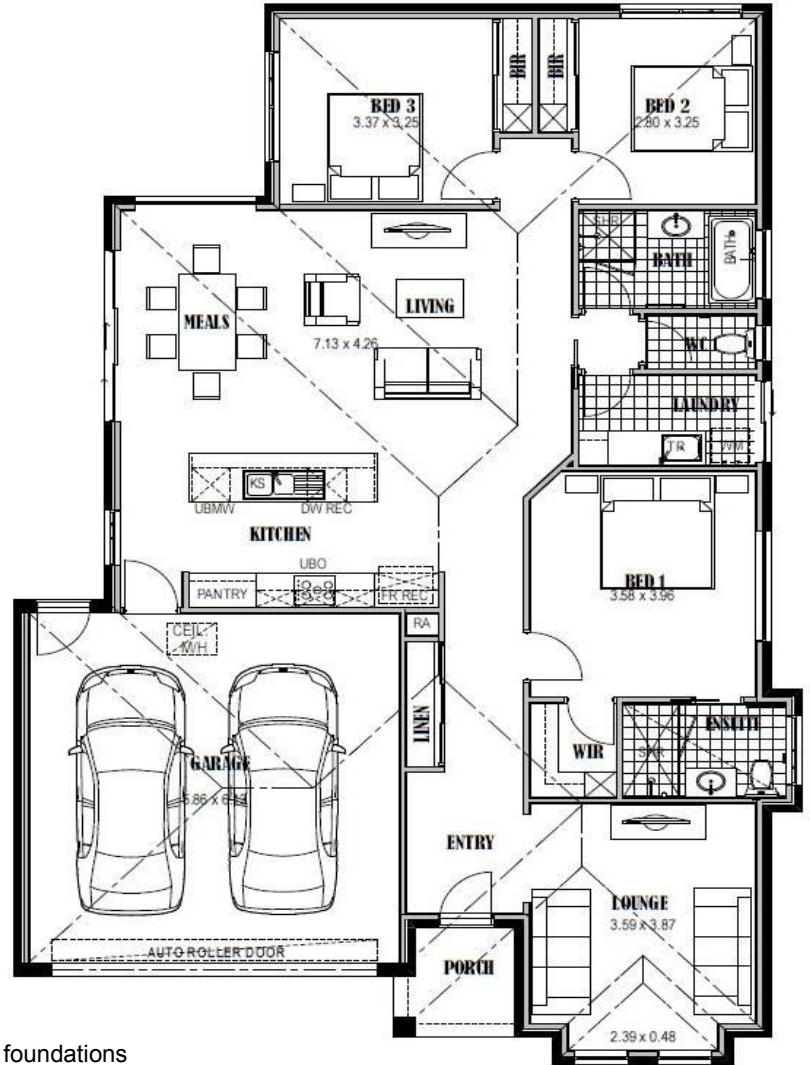


Victoria 190



- ✓ Siteworks and foundations
- ✓ 5 star energy rating
- ✓ 2550mm ceiling height
- ✓ H2 termite resistant framing
- ✓ Colorbond roof and downpipes
- ✓ Full height kitchen
- ✓ Glass splashback
- ✓ Carpet and tiles
- ✓ Automatic roller door
- ✓ Ducted heating and cooling
- ✓ Driveway and paths
- ✓ Letterbox and clothesline
- ✓ Omega appliances
- ✓ Downlights throughout
- ✓ Plus much more...

\$193,800

Less FHOg \$26,500

\$167,300

Living Area	146.78 m2	15.78 sq
Garage	39.89 m2	4.29 sq
Porch	3.39 m2	0.36 sq
TOTAL	190.06 m2	20.43 sq

[House Size 12.5m wide x 18.5m long]