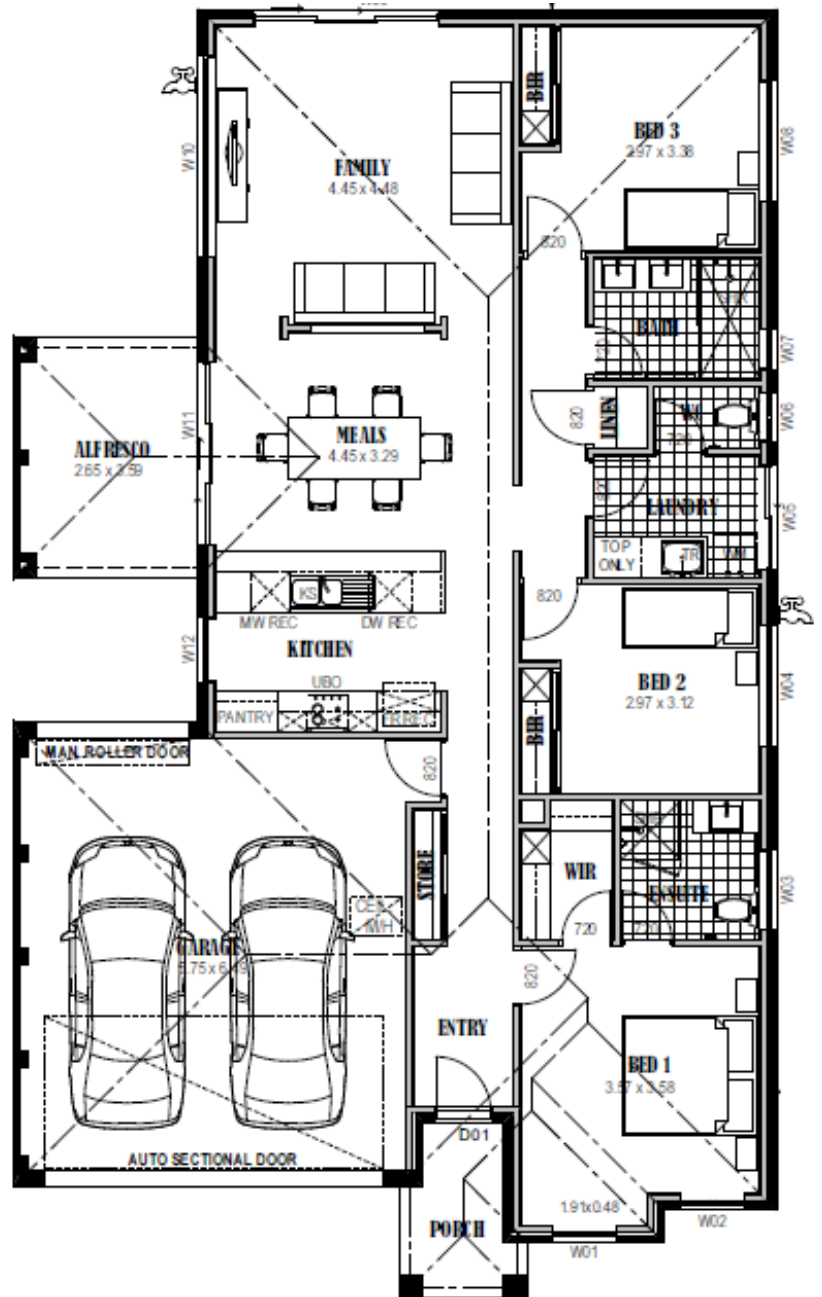


Grove 186



- ✓ Siteworks and foundations
- ✓ 5 star energy rating
- ✓ 2550mm ceiling height
- ✓ H2 termite resistant framing
- ✓ Colorbond roof and downpipes
- ✓ Full height kitchen
- ✓ Glass splashback
- ✓ Carpet and tiles
- ✓ Automatic roller door
- ✓ Ducted heating and cooling
- ✓ Driveway and paths
- ✓ Letterbox and clothesline
- ✓ Omega appliances
- ✓ Downlights throughout
- ✓ Plus much more...

\$188,800
Less FHOG \$26,500
\$162,300

Living Area	132.00 m ²	14.19 sq
Garage	40.78 m ²	4.38 sq
Porch	4.08 m ²	0.44 sq
Alfresco	9.91 m ²	1.07 sq
TOTAL	186.77 m²	20.08 sq

[House Size 11.4m wide x 18.8m long]