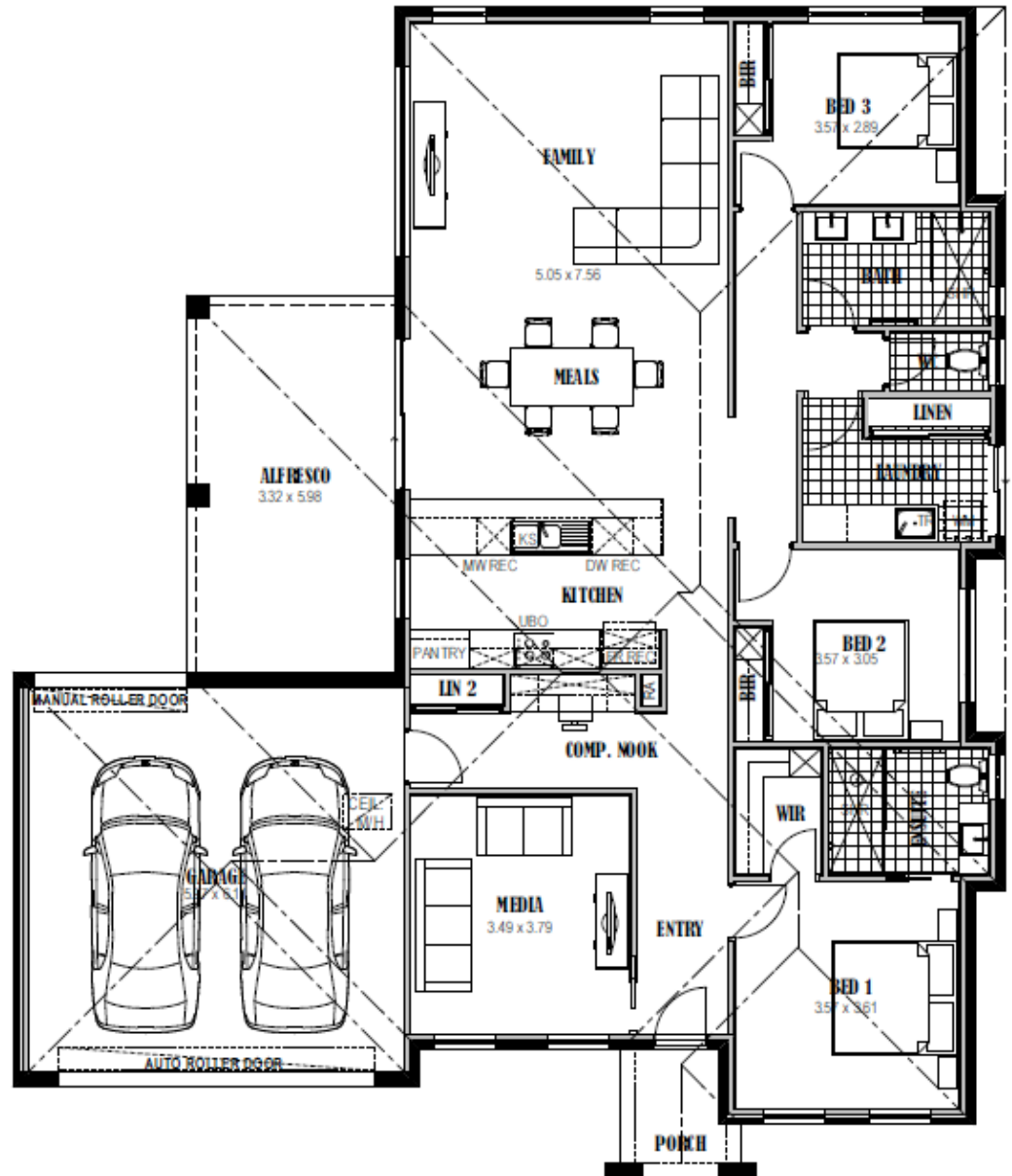


Castleton 225



- ✓ Siteworks and foundations
- ✓ 5 star energy rating
- ✓ 2550mm ceiling height
- ✓ H2 termite resistant framing
- ✓ Colorbond roof and downpipes
- ✓ Full height kitchen
- ✓ Glass splashback
- ✓ Carpet and tiles
- ✓ Automatic roller door
- ✓ Ducted heating and cooling
- ✓ Driveway and paths
- ✓ Letterbox and clothesline
- ✓ Omega appliances
- ✓ Downlights throughout
- ✓ Plus much more...

\$228,750
Less FHOH \$26,500
\$202,250

Living Area	160.71 m2	17.28 sq
Garage	41.20 m2	4.43 sq
Porch	3.48 m2	0.37 sq
Alfresco	19.85 m2	2.13 sq
TOTAL	225.24 m2	24.21 sq

[House Size 15.8m wide x 18.6m long]