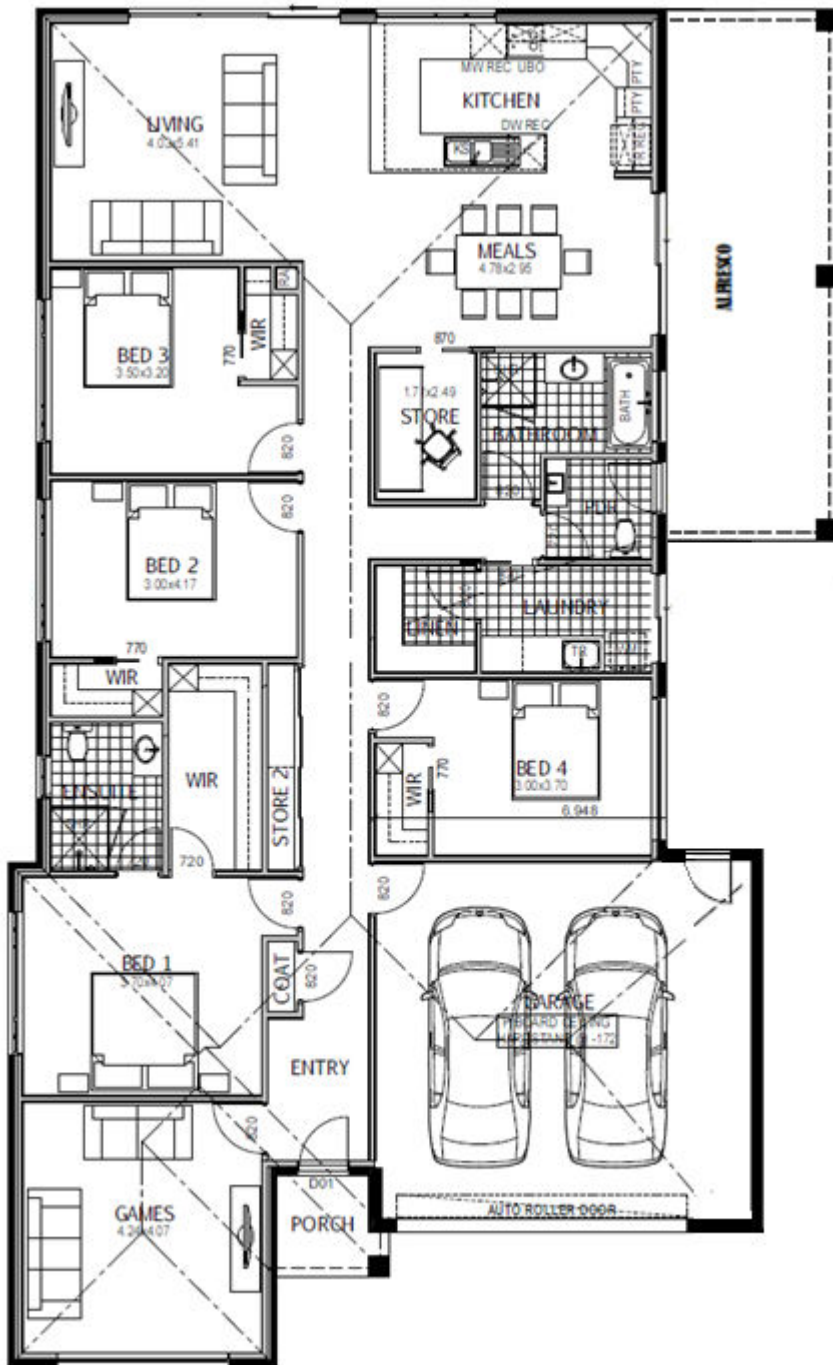


Koendidda 272



- ✓ Siteworks and foundations
- ✓ 2550mm ceiling height
- ✓ H2 termite resistant framing
- ✓ Colorbond roof and downpipes
- ✓ Full height kitchen
- ✓ Glass splashback
- ✓ Carpet and tiles
- ✓ Automatic roller door
- ✓ Ducted heating and cooling
- ✓ Driveway and paths
- ✓ Letterbox and clothesline
- ✓ 900mm Omega appliances
- ✓ Downlights throughout
- ✓ Plus much more...

\$261,500
Less FHO \$26,500

\$235,000

| | | |
|--------------|------------------|-----------------|
| Living Area | 201.01 m2 | 21.61 sq |
| Garage | 41.22 m2 | 4.43 sq |
| Porch | 2.95 m2 | 0.32 sq |
| Alfresco | 26.97 m2 | 2.9 sq |
| TOTAL | 272.15 m2 | 29.26 sq |

[House Size 14.1m wide x 22.7m long]