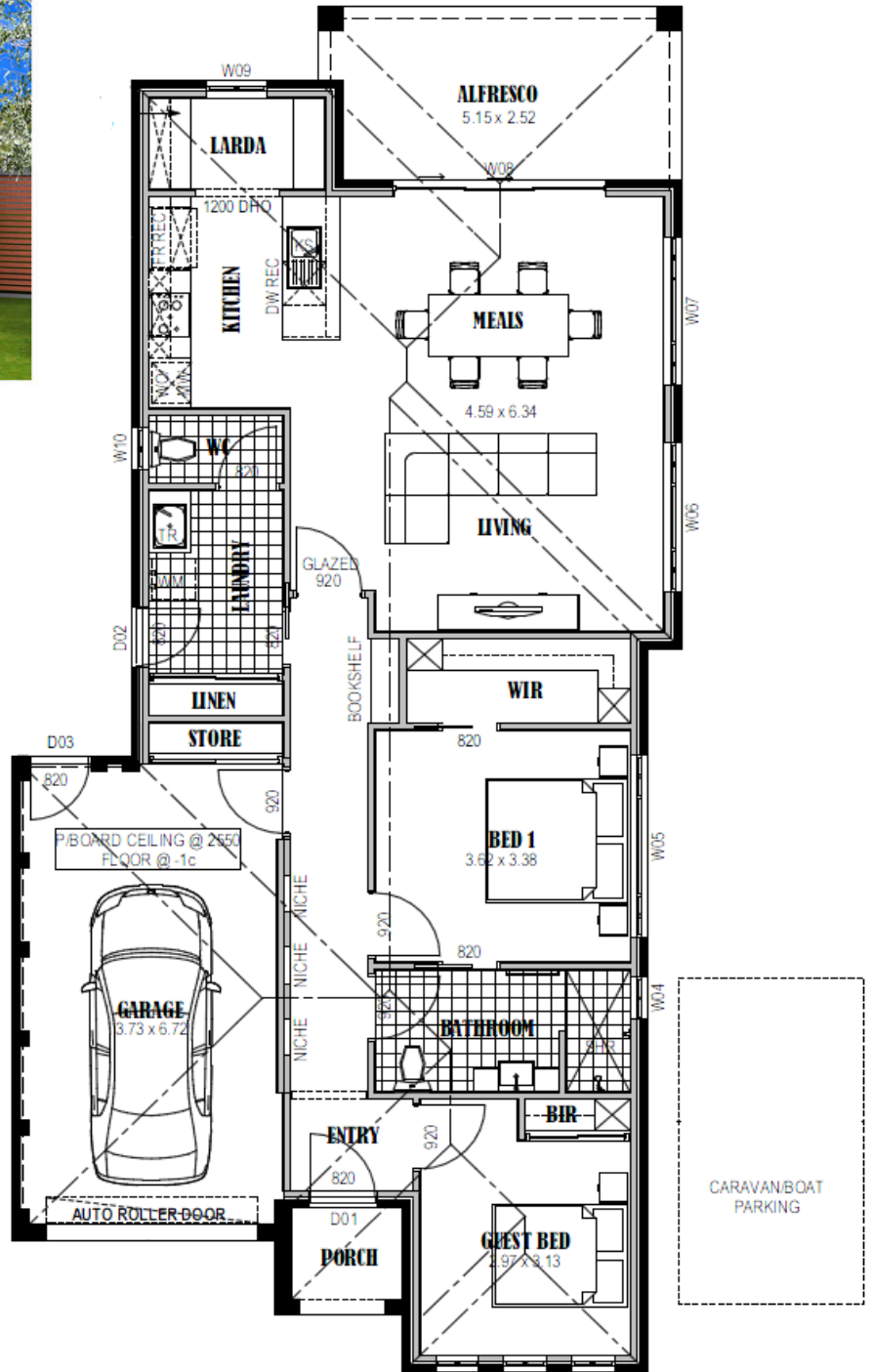


Grove 153



- ✓ Siteworks and foundations
- ✓ 2550mm ceiling height
- ✓ H2 termite resistant framing
- ✓ Colorbond roof and downpipes
- ✓ Full height kitchen
- ✓ Glass splashback
- ✓ Carpet and tiles
- ✓ Automatic roller door
- ✓ Ducted heating and cooling
- ✓ Driveway and paths
- ✓ Letterbox and clothesline
- ✓ 900mm Omega appliances
- ✓ Downlights throughout
- ✓ Plus much more...

\$179,800
Less FHO \$26,500
\$153,300

Living Area	111.83 m2	12.02 sq
Garage	26.63 m2	2.86 sq
Porch	2.70 m2	0.29 sq
Alfresco	12.47 m2	1.34 sq
TOTAL	153.63 m2	16.51 sq

[House Size 9.4m wide x 19.8m long]