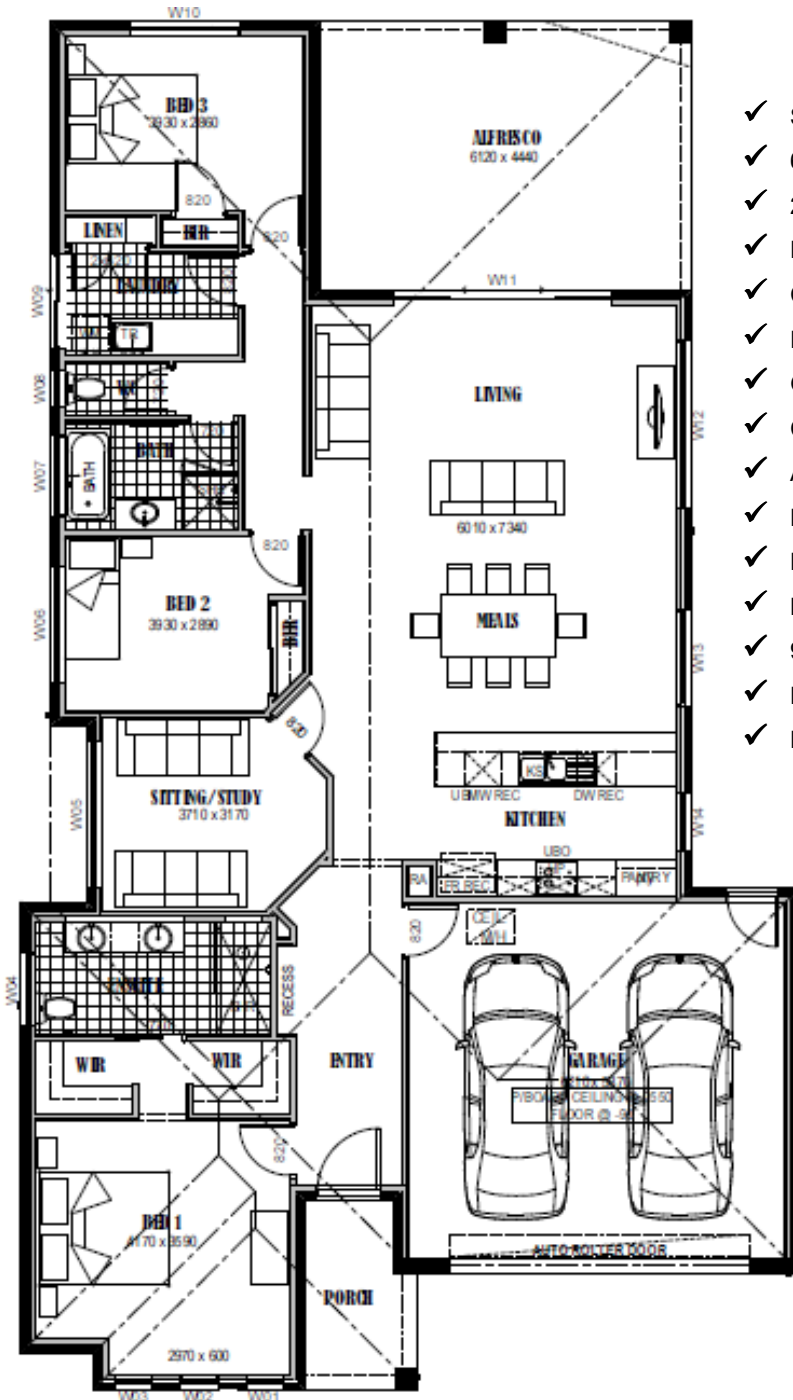


# Windsor 242



- ✓ Siteworks and foundations
- ✓ 6 star energy rating
- ✓ 2550mm ceiling height
- ✓ H2 termite resistant framing
- ✓ Colorbond roof and downpipes
- ✓ Full height kitchen
- ✓ Glass splashback
- ✓ Carpet and tiles
- ✓ Automatic roller door
- ✓ Ducted heating and cooling
- ✓ Driveway and paths
- ✓ Letterbox and clothesline
- ✓ 900mm Omega appliances
- ✓ Downlights throughout
- ✓ Plus much more...



**\$239,500**

Less FHOG \$26,500

**\$213,000**

Living Area	169.36 m2	18.21 sq
Garage	40.25 m2	4.34 sq
Porch	5.27 m2	0.56 sq
Alfresco	27.17 m2	2.92 sq
<b>TOTAL</b>	<b>242.05 m2</b>	<b>26.03 sq</b>

[House Size 12.8m wide x 22.4m long]