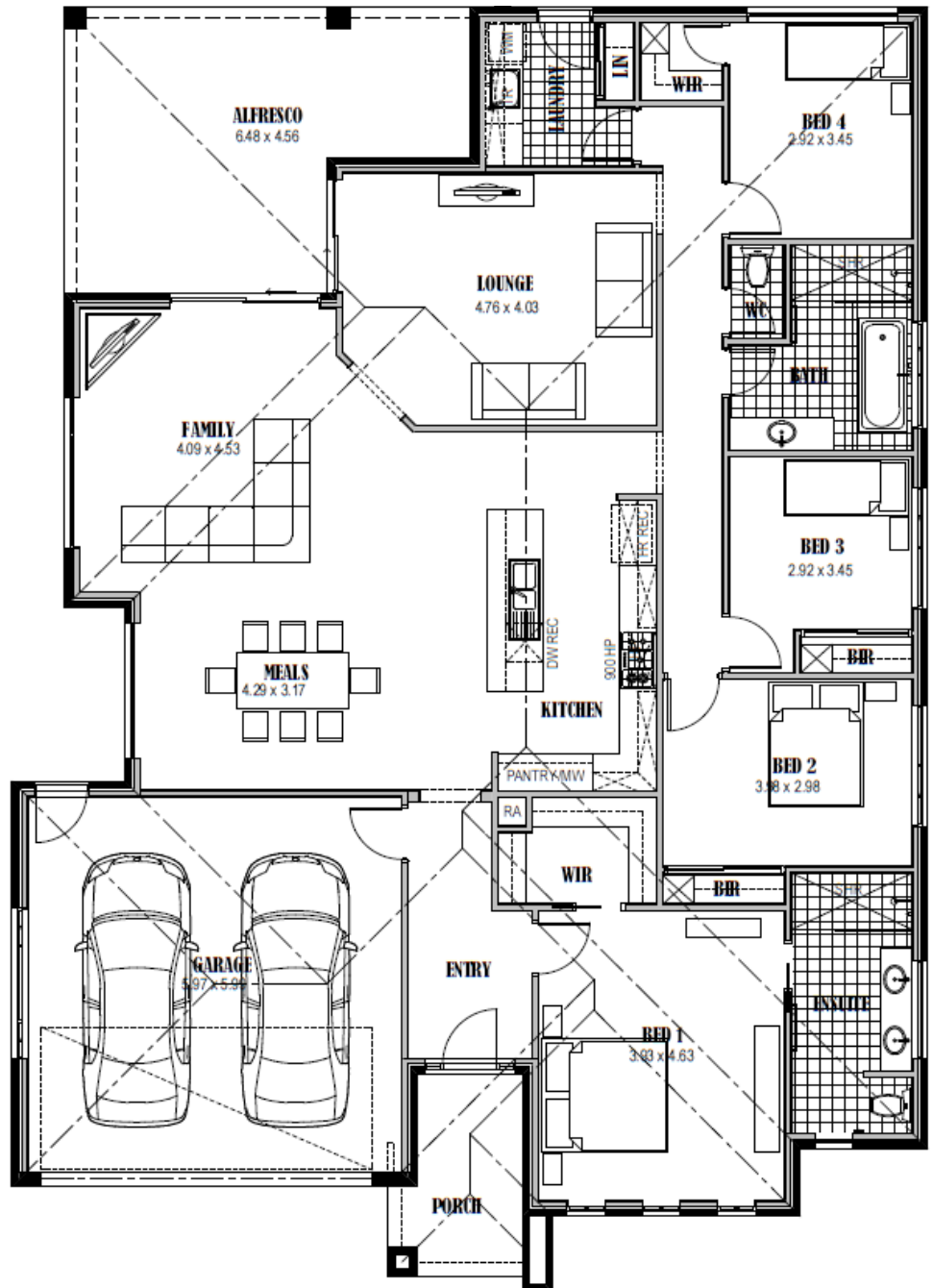


Wattle Glen 267

afonso

Building Solutions

PTY LTD



- ✓ Siteworks and foundations
- ✓ 2550mm ceiling height
- ✓ H2 termite resistant framing
- ✓ Colorbond roof and downpipes
- ✓ Full height kitchen
- ✓ Glass splashback
- ✓ Carpet and tiles
- ✓ Automatic roller door
- ✓ Ducted heating and cooling
- ✓ Driveway and paths
- ✓ Letterbox and clothesline
- ✓ 900mm Omega appliances
- ✓ Downlights throughout
- ✓ Plus much more...

\$258,000
Less FHO \$26,500

\$231,500

Living Area	196.09 m2	21.08 sq
Garage	39.59 m2	4.25 sq
Alfresco	24.62 m2	2.65 sq
Porch	6.72 m2	0.72 sq
TOTAL	267.02 m2	28.70 sq

[House Size 14.6m wide x 20.5m long]

David Afonso: 0438 323 323

Pedro Afonso: 0408 567 732

www.afonso.com.au