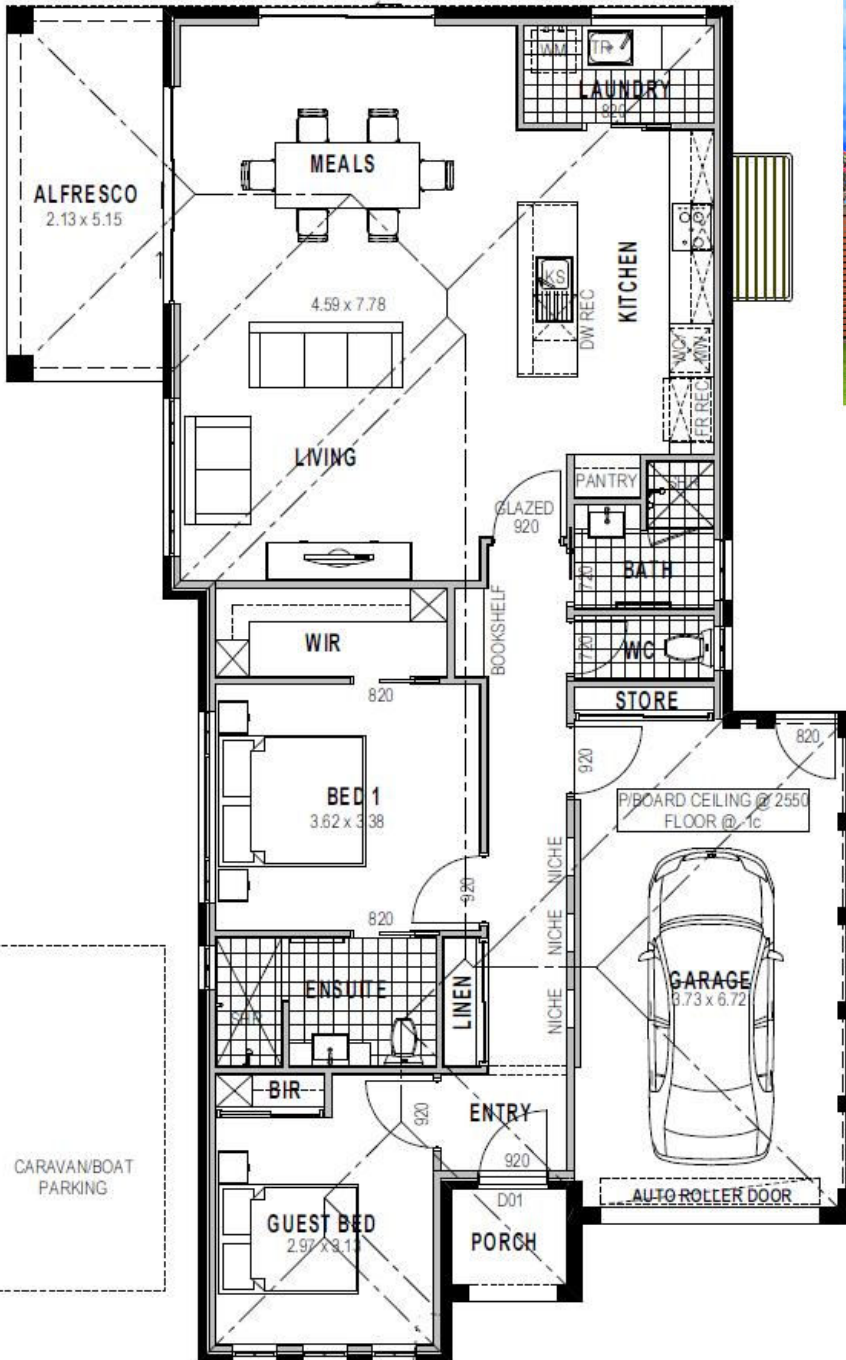


# Grove 158



Living Area	117.80 m2	12.67 sq
Garage	26.63 m2	2.86 sq
Porch	2.70 m2	0.29 sq
Alfresco	10.97 m2	1.18 sq
<b>TOTAL</b>	<b>158.10 m2</b>	<b>17.00 sq</b>

**\$182,000**  
Less FHOg \$26,500  
**\$155,500**

- ✓ Siteworks and foundations
- ✓ 2550mm ceiling height
- ✓ H2 termite resistant framing
- ✓ Colorbond roof and downpipes
- ✓ Full height kitchen
- ✓ Glass splashback
- ✓ Carpet and tiles
- ✓ Automatic roller door
- ✓ Ducted heating and cooling
- ✓ Driveway and paths
- ✓ Letterbox and clothesline
- ✓ 900mm Omega appliances
- ✓ Downlights throughout
- ✓ Plus much more...

[House Size 11.6m wide x 18.6m long]

David Afonso: 0438 323 323

Pedro Afonso: 0408 567 732

[www.afonso.com.au](http://www.afonso.com.au)