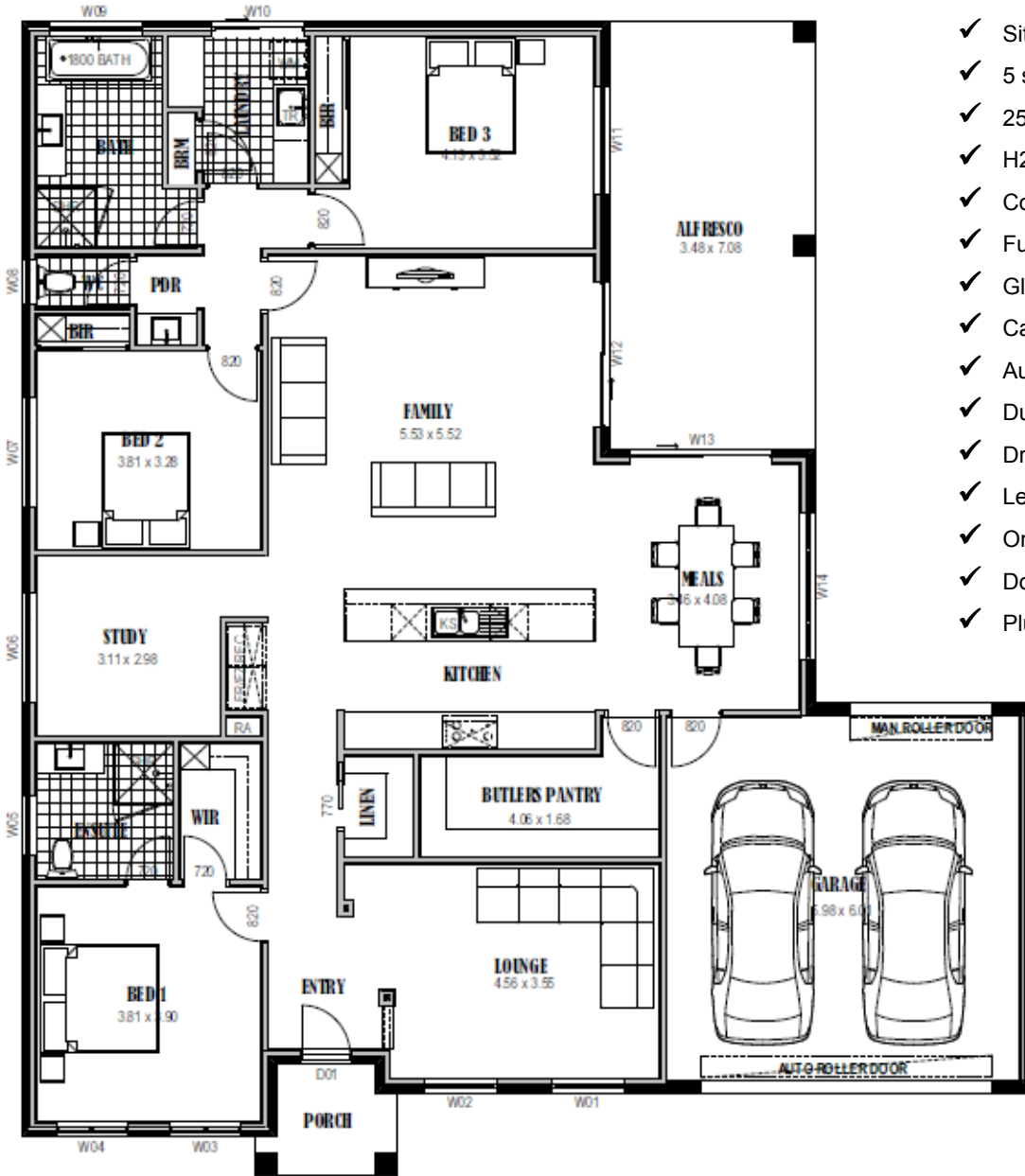


Trilogy 268



- ✓ Siteworks and foundations
- ✓ 5 star energy rating
- ✓ 2550mm ceiling height
- ✓ H2 termite resistant framing
- ✓ Colorbond roof and downpipes
- ✓ Full height kitchen
- ✓ Glass splashback
- ✓ Carpet and tiles
- ✓ Automatic roller door
- ✓ Ducted heating and cooling
- ✓ Driveway and paths
- ✓ Letterbox and clothesline
- ✓ Omega appliances
- ✓ Downlights throughout
- ✓ Plus much more...

Living Area	200.31 m ²	21.54 sq
Garage	39.79 m ²	4.28 sq
Porch	3.79 m ²	0.41 sq
Alfresco	24.64 m ²	2.65 sq
TOTAL	268.53 m²	28.88 sq

\$254,000
Less FHOG \$26,500

\$227,500

[House Size 17.1m wide x 18.4m long]

