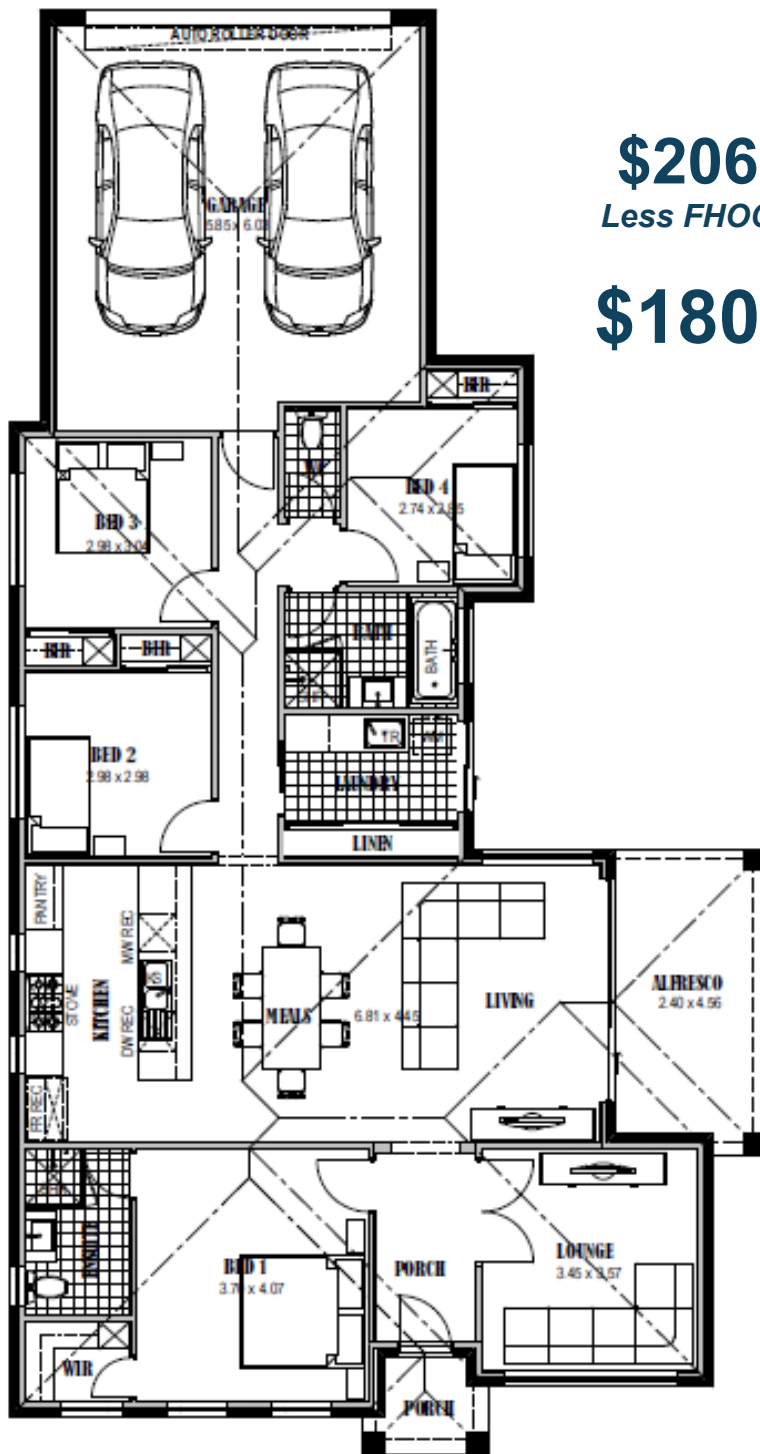


Payne 203



\$206,800
Less FHOV \$26,500
\$180,300



- ✓ Siteworks and foundations
- ✓ 5 star energy rating
- ✓ 2550mm ceiling height
- ✓ H2 termite resistant framing
- ✓ Colorbond roof and downpipes
- ✓ Full height kitchen
- ✓ Glass splashback
- ✓ Carpet and tiles
- ✓ Automatic roller door
- ✓ Ducted heating and cooling
- ✓ Driveway and paths
- ✓ Letterbox and clothesline
- ✓ Omega appliances
- ✓ Downlights throughout
- ✓ Plus much more...

Living Area	147.42 m2	15.85 sq
Garage	42.14 m2	4.53 sq
Porch	2.66 m2	0.29 sq
Alfresco	11.24 m2	1.21 sq
TOTAL	203.46 m2	21.88 sq

[House Size 12.1m wide x 23m long]